

Emergency-stop FRPVKOOIP

Category:	Emergency-stops
Series:	SHORTRON®
Panel cut-out:	Ø 22.3 mm
Mounting depth:	102 mm
Degree of protection:	IP65 / IP67
Illumination:	no
With labelling option:	no
Contact equipment:	2 NC + 1 NO
Connection type:	PCB-mount terminals
Front bezel	yellow
mushroom head	red
Mechanical life:	30,000 switching cycles
Shape:	round
Electrical life:	30,000 switching cycles at rated load
Positive opening:	acc. to EN60947-5-1, appendix. K (emerg.stop)
Foolproof:	yes
Anti-lock collar:	no
Switching position indicator:	yes
Release:	pull
Contact material:	AgNi

Optional accessory



Insulated plastic enclosure, 1 mounting hole DIRL1V-R22



Insulated plastic enclosure, 1 mounting hole DIRL1VGB-R22



Insulated plastic enclosure, 2 mounting holes DIRL2V-R22



Insulated plastic enclosure, 3 mounting holes D1RL3V-R22



Insulated plastic enclosure, 3 resp. 4 mounting holes D1RL4V-R22



Faston clamp 2.8 x 0.8 mm with snap-in pin FH2,8



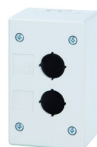
Insulating case IH2,8



Insulated plastic enclosure, 1 mounting hole IRL1M



Insulated plastic enclosure, 1 mounting hole IRL1M_GELB



Insulated plastic enclosure, 2 mounting holes IRL2M



Insulated plastic enclosure, 3 mounting holes IRL3M



Insulated plastic enclosure, 5 mounting holes IRL5M

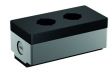
Yellow nameplate NAS_22



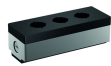
Yellow nameplate with quadrilingual imprint NAS_22_548



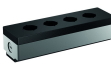
Empty enclosure with predetermined breaking point PXD1



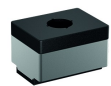
Empty enclosure with predetermined breaking point PXD2



Empty enclosure with predetermined breaking point PXD3



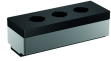
Empty enclosure with predetermined breaking point PXD4



Empty enclosure PXO1



Empty enclosure PXO2



Empty enclosure PXO3



Empty enclosure PXO4



Protective shroud RRSK



Insulated plastic enclosure with 1 mounting hole SIL22/1



High insulated plastic enclosure with 1 mounting hole SILH22/1

